
NICU Database Program, Ver 2.0

1 Program Overview

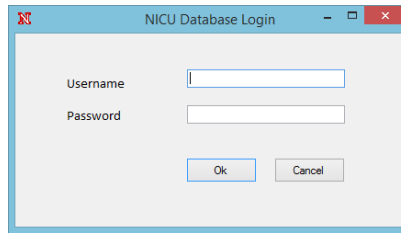


Figure 1: NICU Login

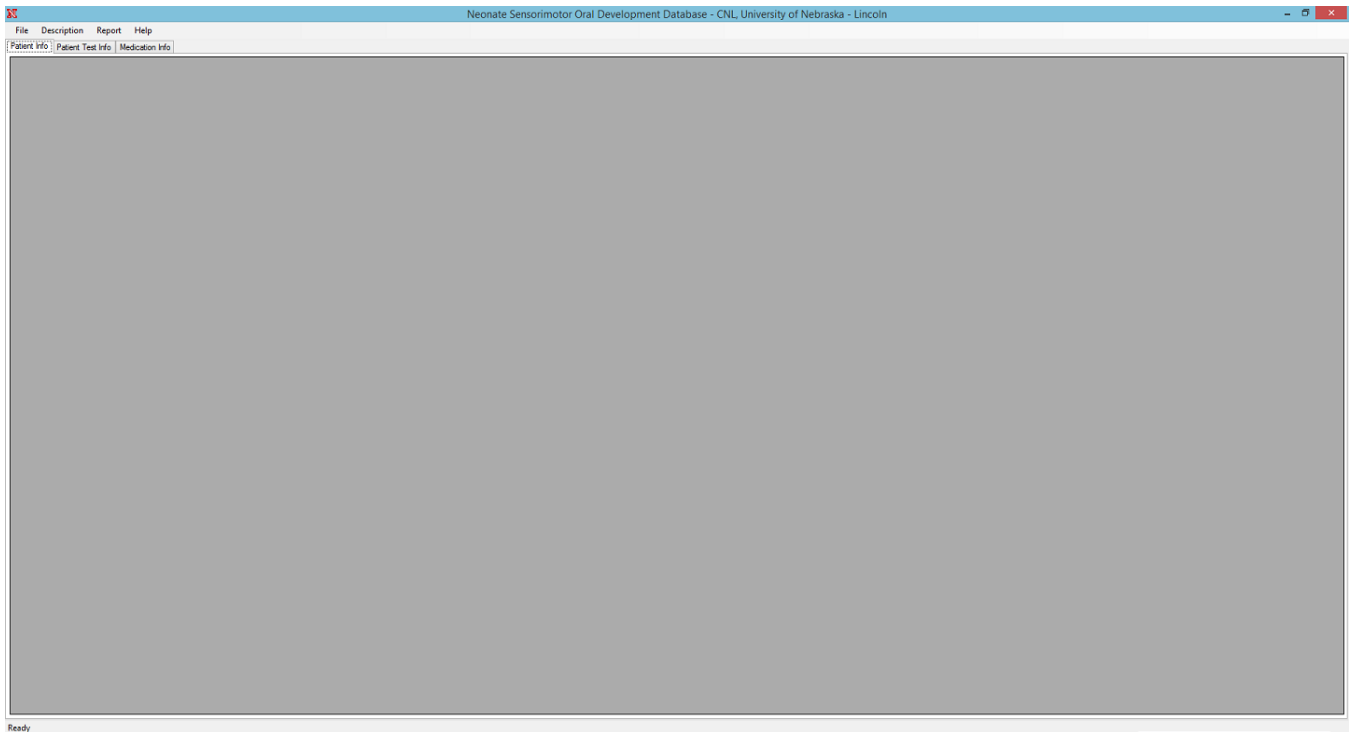


Figure 2: NICU Database Main Window

Figure 1 shows the Login Window. Username and Password will be given by the administrator. Figure 2 shows the main window of NICU Database program. In the main window, you can open the MS access files (.mdb or .accdb), and patient personal information, patient test information, and patient medication information are available to review. In addition, you are able to access the Description of database file, and the Enrollment report. See details below (Figure 3, Figure 4)

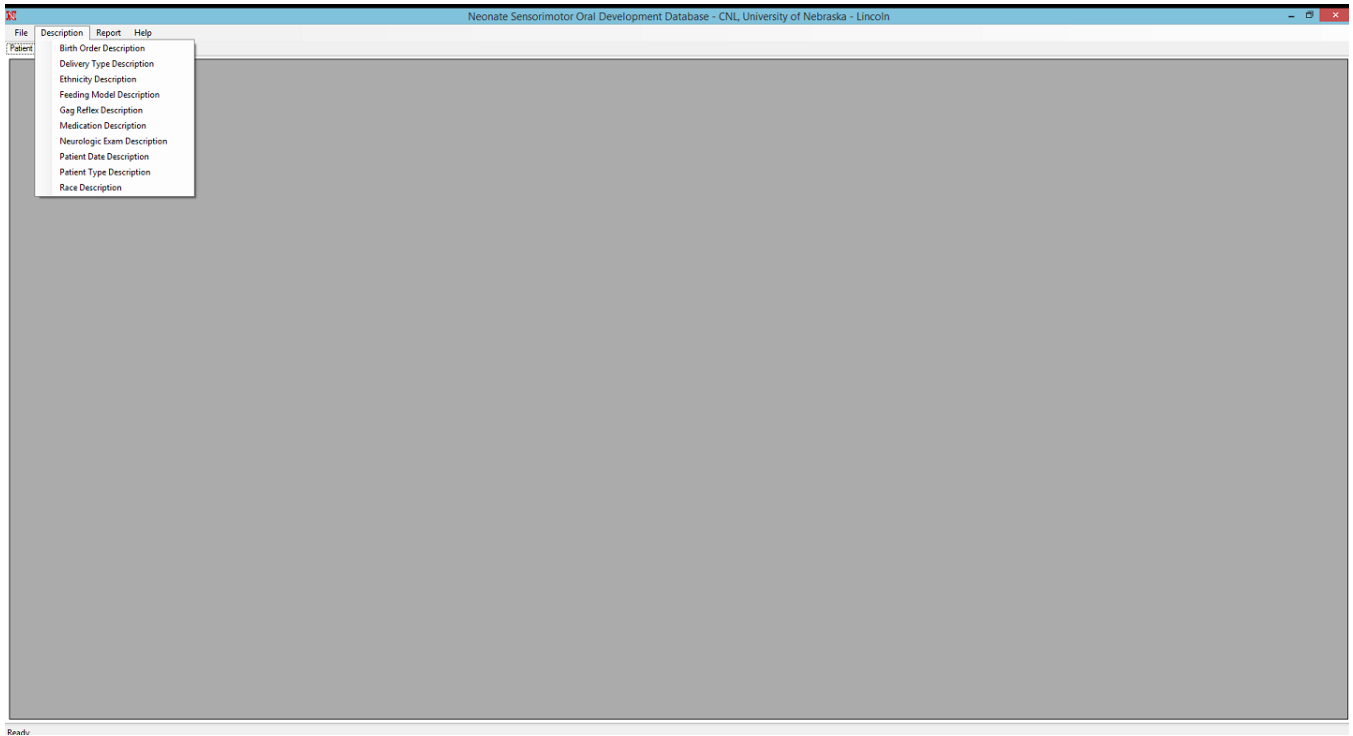


Figure 3: NICU Description

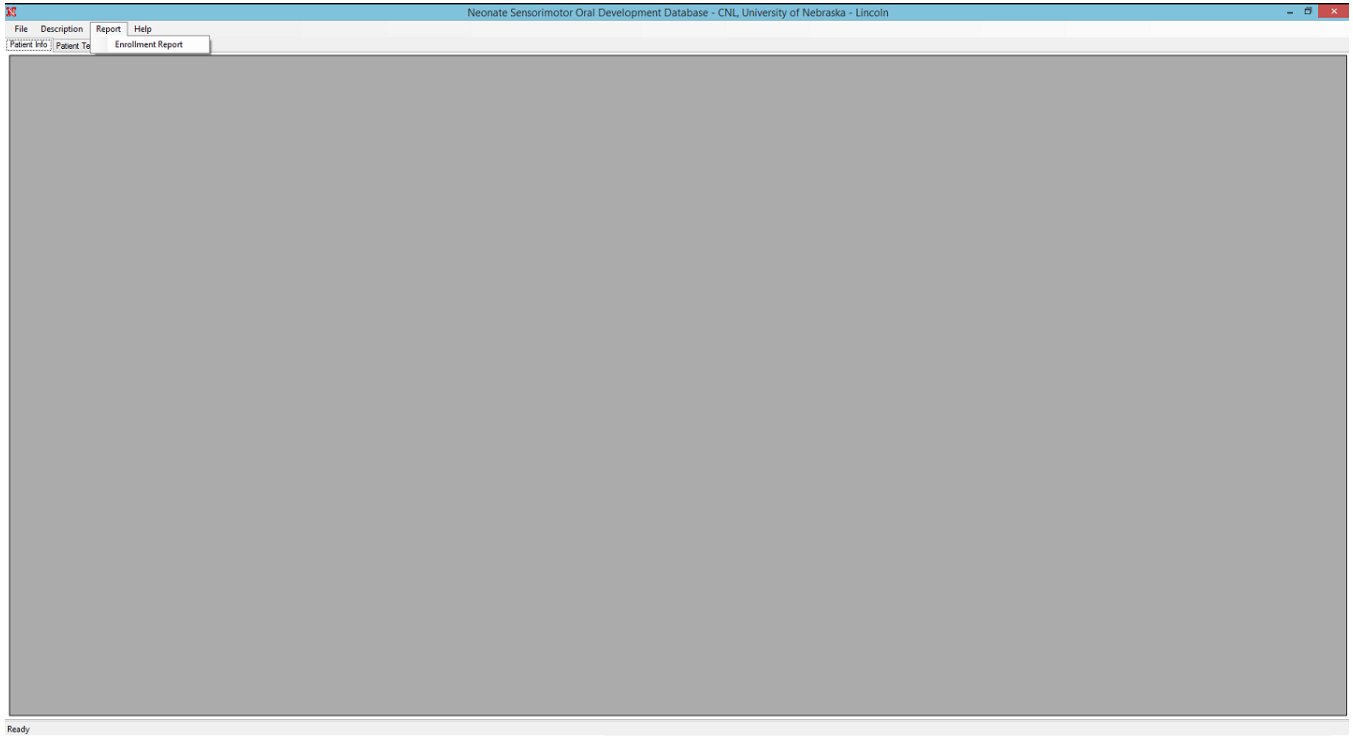


Figure 4: NICU Enrollment Report

2 How to use NICU Database Program

Find and open the NICU MS Access files (.mdb or .accdb, Figure 5). Please use the correct Access files reviewed by the administrator. It will takes a few seonds to load the database files due to a heavy size of Access files.

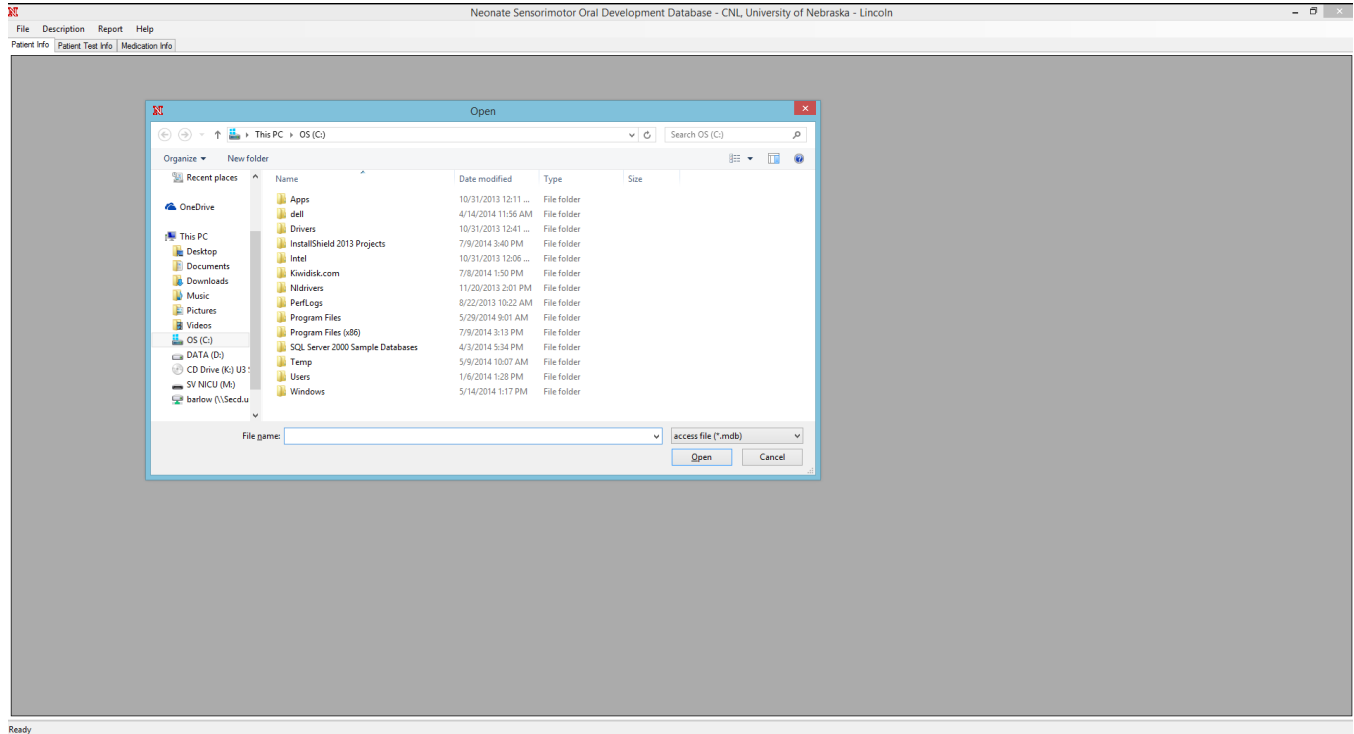


Figure 5: Open the database file

After loading the database file, Patient personal information, patient test information, and medication information are available to view by using tab menu. Enrollment report and Descriptions are also able to get through Description and Report tab menu. Version of NICU Database program can be identified on Help Menu.

The file name and location are shown at the bottom of left corner. Next page will show you how NICU Database program will look like after a succesful loading the databse file (Figure 6, Figure 7).

More detailed information about Patient test information can be reviewed by double-clicking in Patient Test Info Tab (Figure 7). You can do a double-click anywhere (PatientNum, TrialsNum, or TrialDate) in Patient Test Info Tab, and this will bring you a new window (Figure 8).

Figure 8: Patient Demographic Information

More detailed patient information such as Birth date, 1st assessment session date, or Gender is shown in the Demographic menu tab. If 1st assessment session, 1st treatment session or discharge date is unknown from the database file, this section will be displayed as "N/A".

In the Feeding menu tab, Feeding data will be calculated each day and will be shown at Feeding Date (Daily). This information can be executed to MS Excel File format by using Export (Figure 9). Oxygen data, and hours of Vent/Oscillator, CPAP/HFNC, Cannula/Hood, and Total Oxygen Therapy will be displayed in the Oxygen/Neuro menu tab (Figure 10). When the patient had any kinds of experiments such as EEG, CT or MRI, it will be checked at the checkbox of each experiment.

Patient Test Information

Demographic Feeding Oxygen/Neuro

Patient No.

Feeding Date (All)

FeedingDate	FeedingTime	FeedType	Supplement	BreastFeed	Bottle	NG_OG
4/23/2009	0					
4/23/2009	0					
4/23/2009	0					
4/23/2009	1					
4/23/2009	1					
4/23/2009	20:00	PO	NG	0	8	32

Feeding Date (Daily)

Feeding Date	PO %
04/27/2009	
04/28/2009	15
04/29/2009	15

Export

Close

Figure 9: Feeding Information

Patient Test Information

Demographic Feeding Oxygen/Neuro

OxygenDate	VentOscillator	CPAP_HFNC	Cannulahood	RoomAir

* [Redacted]

EEG
 CT of Head
 Cranial Ultrasound
 MRI of head
 Intraventricular Hemorrhage
 Ventricular Dilatation
 Porencephalic cyst
 Periventricular Leukomalacia
 VP Shunt
 CSF culture positive meningitis
 ABR/A-ABR
 ROP
 Laser eye surgery
 Blood culture + sepsis

Vent/Oscillator Hours
CPAP/HFNC Hours
Cannula/Hood Hours
Total Oxygen Therapy Hours

Close

Figure 10: Oxygen Information